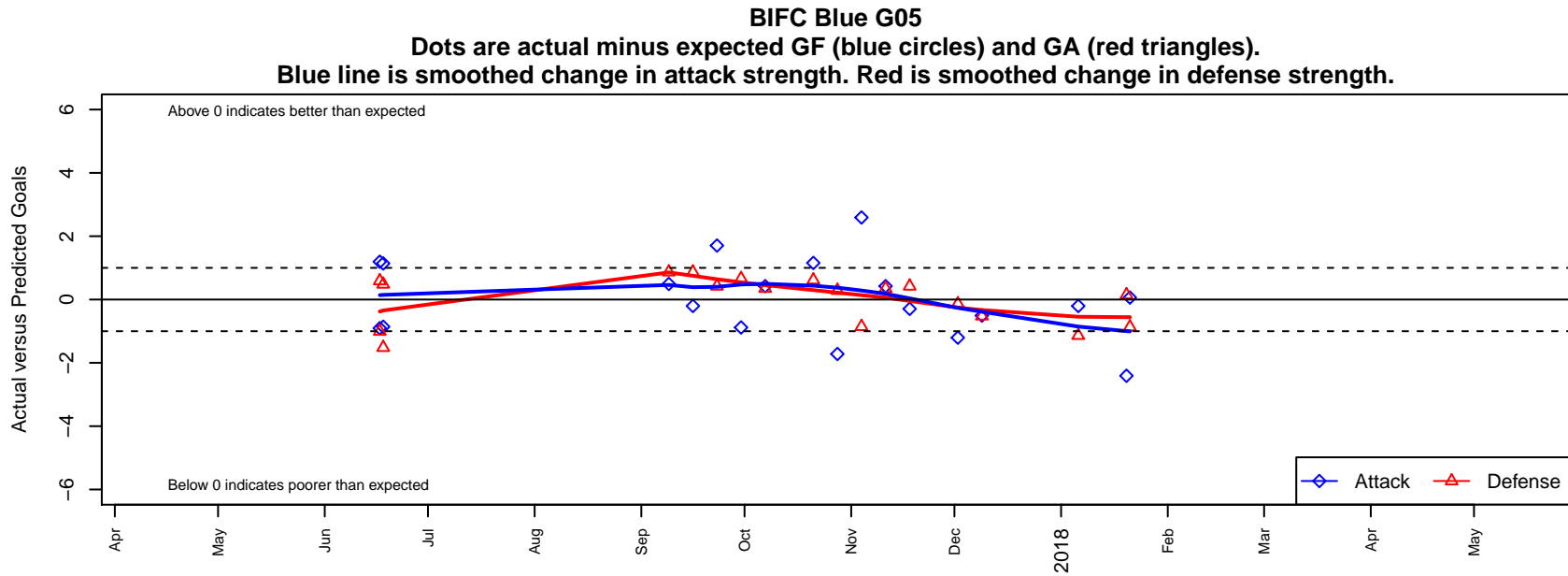


BIFC Blue G05

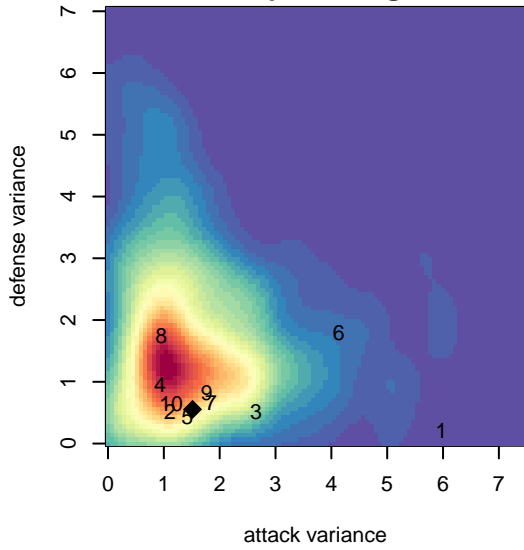
Bainbridge Island FC
Bainbridge, WA
G05 total strength=847
attack=1.16 defense=1.19
fall league = NPSL Div 2 (05) U13

alt names used:
Bainbridge Island FC 05 Girls
Bainbridge Island FC G05 Blue
Bainbridge Island FC G05 Blue

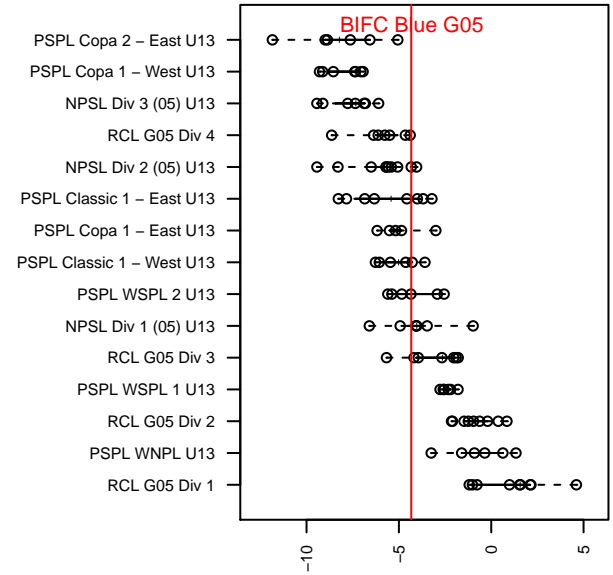
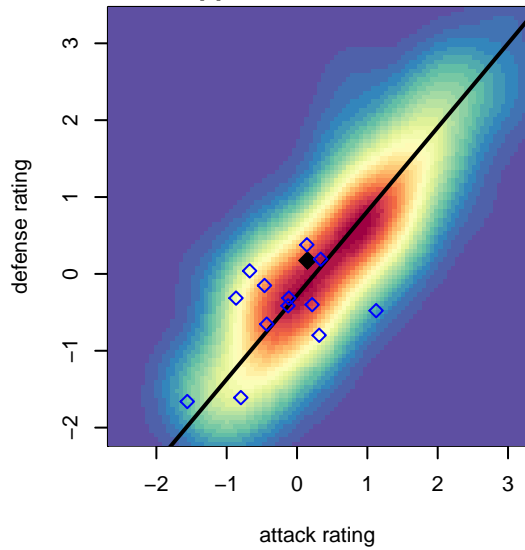
Venues played:
2017 Skagit Firecracker Div. 3 U13
2017 NPSL Division 2 (05) U13
2017 Founders Cup G05 Div A



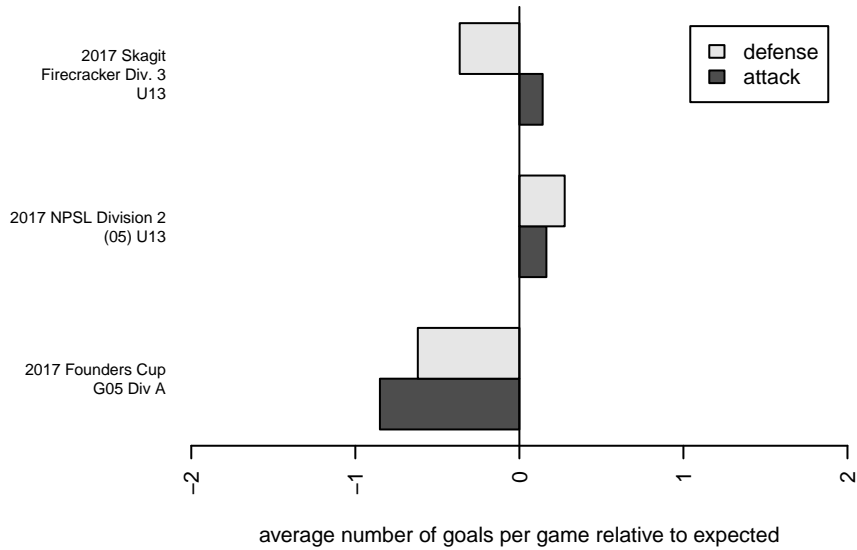
**attack and defense variance (black dot)
relative to other teams
and top 10 in region**



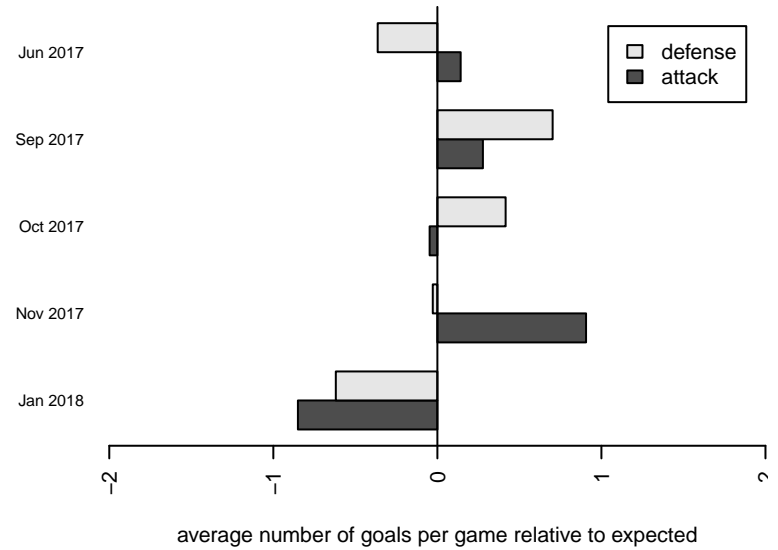
**attack and defense rating
relative to others at age
and all opponents in last 13 months**



Performance relative to 13 month average



Performance relative to 13 month average



date	home		away		venue	pred.home	pred.away
2018-01-21	Crossfire Select Gold-Jordan G05	2	BIFC Blue G05	1	2017 Founders Cup G05 Div A	1.13	0.94
2018-01-20	BIFC Blue G05	4	Newport FC Panthers G05	0	2017 Founders Cup G05 Div A	6.41	0.15
2018-01-06	BIFC Blue G05	1	Seattle United Shoreline Blue G05	2	2017 Founders Cup G05 Div A	1.20	0.86
2017-12-09	Storm King G05	1	BIFC Blue G05	1	2017 NPSL Division 2 (05) U13	0.48	1.51
2017-12-02	BIFC Blue G05	0	Seattle United Shoreline Blue G05	1	2017 NPSL Division 2 (05) U13	1.20	0.86
2017-11-18	NSC White Reign G05	0	BIFC Blue G05	1	2017 NPSL Division 2 (05) U13	0.42	1.30
2017-11-11	Sky River SC Fierce G05	0	BIFC Blue G05	2	2017 NPSL Division 2 (05) U13	0.35	1.58
2017-11-04	BIFC Blue G05	9	Newport FC Panthers G05	1	2017 NPSL Division 2 (05) U13	6.41	0.15
2017-10-28	FWFC White G05	0	BIFC Blue G05	4	2017 NPSL Division 2 (05) U13	0.28	5.72
2017-10-21	BIFC Blue G05	3	Seattle United W Blue G05	0	2017 NPSL Division 2 (05) U13	1.84	0.61
2017-10-07	BIFC Blue G05	2	Sky River SC Fierce G05	0	2017 NPSL Division 2 (05) U13	1.58	0.35
2017-09-30	MIFC Crush G05	0	BIFC Blue G05	1	2017 NPSL Division 2 (05) U13	0.66	1.88
2017-09-23	BIFC Blue G05	3	NSC White Reign G05	0	2017 NPSL Division 2 (05) U13	1.30	0.42
2017-09-16	Seattle United Shoreline Blue G05	0	BIFC Blue G05	1	2017 NPSL Division 2 (05) U13	0.86	1.20
2017-09-09	BIFC Blue G05	2	Southlake Select Red G05	0	2017 NPSL Division 2 (05) U13	1.51	0.87
2017-06-18	BIFC Blue G05	3	Tlaxtli G05	2	2017 Skagit Firecracker Div. 3 U13	1.86	2.48
2017-06-18	Tlaxtli G05	4	BIFC Blue G05	1	2017 Skagit Firecracker Div. 3 U13	2.48	1.86
2017-06-17	WA Rush Nero G05	2	BIFC Blue G05	2	2017 Skagit Firecracker Div. 3 U13	0.99	2.90
2017-06-17	BIFC Blue G05	3	Snohomish United Red G05	0	2017 Skagit Firecracker Div. 3 U13	1.81	0.59